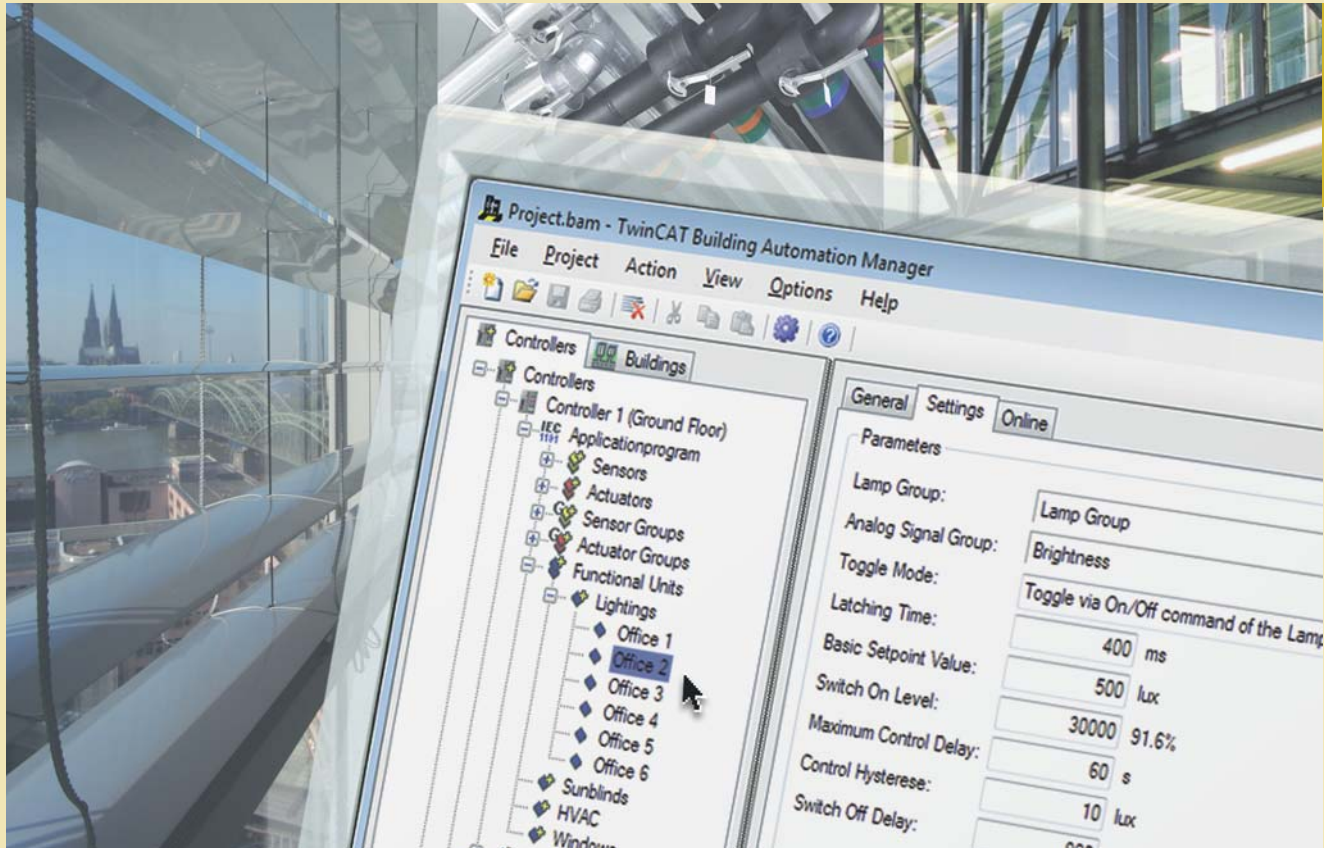


TwinCAT Building Automation Framework



→ “Configuring instead of programming” is the motto of the TwinCAT Building Automation Framework. This approach markedly simplifies engineering and commissioning and does not call for any programming expertise. It enables system integrators, operators and building users to quickly and easily incorporate new functions, modify scenarios or re-assign sensors and actuators – all with just a few clicks.

Configuring instead of programming

Beckhoff offers two ways of setting up and commissioning building projects. Complex projects are programmed using TwinCAT PLC automation software, which conforms to international IEC 61131-3 programming standards. There are already comprehensive PLC libraries available for TwinCAT PLC, for example for HVAC, lighting systems or for integrating subsystems such as EIB or LON.

The new TwinCAT Building Automation Framework offers an alternative approach to supporting system integrators engaged in developing and commissioning. The Building Automation Framework incorporates the Building Automation Manager and the application program. The Building Automation Manager is the system's configu-

ration control centre. This is where the available components, such as Industrial PCs, Embedded PCs, Bus Terminals and data points are entered and assigned to the appropriate functions.

The status of all the system's sensors and actuators can be viewed and controlled via the TwinCAT Building Automation Manager. The actuators can also be triggered by hand – for instance when the system is being commissioned. Configuration wizards are also provided to enable users to easily link actuators and sensors.