

Beckhoff control technology at Fieberbrunn campsite



→ “Conventional building bus solutions would have reached their limits,” said managing director Klaus Gschnaller from Elektro-Team Lechner. “For the Tirol Camp Energiebrunnen camping project at Fieberbrunn, Austria, we therefore decided to use Ethernet controllers from Beckhoff. They offer full control for the benefit and enjoyment of holidaymakers.”



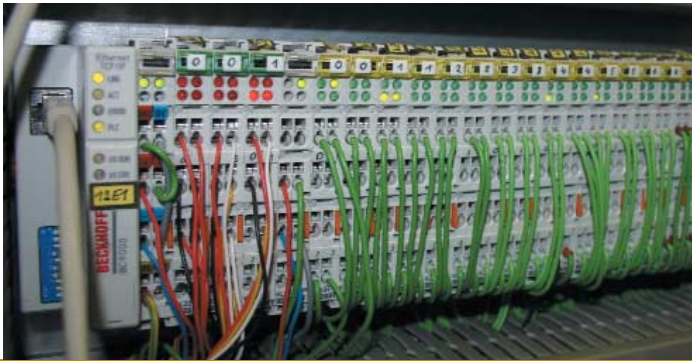
The “Tirol Camp Fieberbrunn” campsite offers a wide range of wellness options, from brine tunnels and adventure showers to light therapy and much more. A Beckhoff PC is used for the camp’s building control systems.



Five-star camping

Apart from the campers with their caravans and tents, the Tirol-based complex is no ordinary campsite, but a 5-star wellness oasis that would make many Austrian hotel operators very jealous. It features a facility with an indoor swimming pool, an outdoor pool, a whirlpool, an organic natural pool with attractions for children and adults, and wellness areas covering no less than 700 m². Here, “stress killers” such as a brine tunnel, adventure showers, steam baths, aroma cabins, an icfall grotto, a sunbathing lawn with light therapy and much more, ensure that campers feel like they’re on top of the world during their stay. This is a very complex building – with the corresponding complexity of the control challenges that had to be solved. “For this reason we chose PC-based control technology from Beckhoff, rather than a conventional building bus solution. We frequently implement EIB solutions, but the Tirol Camp Energiebrunnen project also required control for the pool and associated technology. With a building bus we would have reached the limits of feasibility, but with the Beckhoff solution we were open in all directions,” Gschnaller explained.

Four Bus Terminal Controllers with Ethernet interface are connected to the closed-loop central PC control and were programmed by Gschnaller and his team with telephone support from Beckhoff. In the main building, they are located in the reception area and in the restaurant, with two sub-distributors located in the wellness area controlling exterior and interior lighting, cabin heating, access control for different areas, pool technology including filter pumps and attractions such as massage nozzles, jet systems and massage benches, and other devices and parameters. Numerous programs that are repeated at certain intervals ensure that everything is under control in this area. “Via the visualization software installed on a PC in the reception area, we can intervene in the programs at any time and switch to economy or full load operation, for example, depending on the number of guests in the wellness area,” Mr. Gschnaller stressed. Even the pool technology parameters can be called up via the visualization system. In the event of poor water values, countermeasures can currently only be taken directly at the pumps themselves. In order to prevent vandalism and maintain order, monitoring



The bus wiring is implemented as a LAN network, bundled via switches and connected with the Ethernet controllers from Beckhoff.

cameras were installed in the recycling room. These are also integrated in the visualization system.

The bus wiring is implemented as a common LAN network and bundled in the control cabinets via switches, from where it leads to the BC9000 Bus Terminal Controllers from Beckhoff. "This confirms my earlier statement that the system is open in all directions. The system communicates with the lighting system via the DALI terminal."

"It would have been a horrendous task to integrate the control technology for the internal and external pool areas using a contactor control system. Even with other bus systems, it would have been impossible to master the problem. Here too, the flexibility of the Beckhoff control system came in very handy," Gschnaller concluded.